



Reopening 2020-21

Michigan City Area Schools
Re-entry

Update, Wednesday May 12, 2021

COVID-19 Data Dashboard

Active Cases

14

Active STUDENT Cases

12

Active STAFF Cases

2

Total Cases

223

(Since 10/19/20)

Total STUDENT Cases

132

Total STAFF Cases

91

Active Close Contacts

44

Total Close Contacts

1,096

School ▲	Active Cases*	Total Cases**
Barker	0	17
Coolspring	0	4
Edgewood	2	19
Joy	0	13
Knapp	0	18
Krueger	5	24
Lake Hills	0	11
MCHS	7	60
Marsh	0	10
Other ***	0	16
Pine	0	16
Springfield	0	15

* Active Cases includes cases within 10-day isolation period.

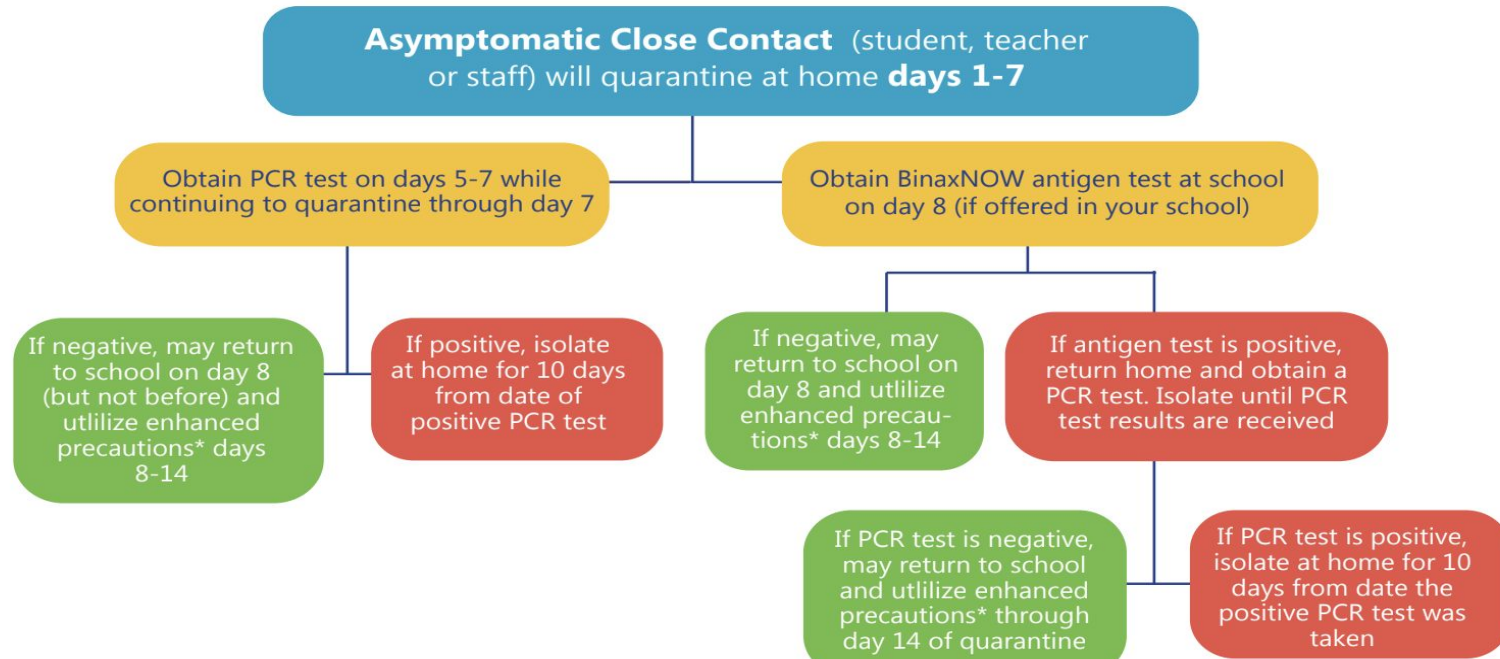
** Total Cases includes cumulative active cases since 10/19/20

*** Other includes individuals based at other MCAS facilities (Transportation, Administration, etc.)

**** Close Contacts includes direct contacts who have been instructed by MCAS to quarantine, based on active cases at school.

Optional Guidance

COVID-19 Asymptomatic Option 2: K-12 Alternative to 14-day Quarantine for Asymptomatic Close Contacts – Return on day 8 after 7 days of quarantine



Recommendation

- Staff and students who are ill with **symptoms of COVID-19** should seek medical attention for further evaluation and instructions. The [Indiana State Department of Health website](#) has a list of testing facilities, their location, and hours of operation. This list is updated frequently. **MCAS will not administer COVID-19 tests at school.**

- Page 5

- **MCAS will follow** current ISDH Guidelines for Return to School, **which** can be found at the following links:

COVID-19 School Attendance Quick Reference ([English](#)) ([Spanish](#))

[Decision Tree: Guidance for quarantine and BinaxNOW testing in schools](#)

~~COVID-19: When a student, faculty or staff member can return to school~~ ([English](#)) ([Spanish](#))

- Page 6