

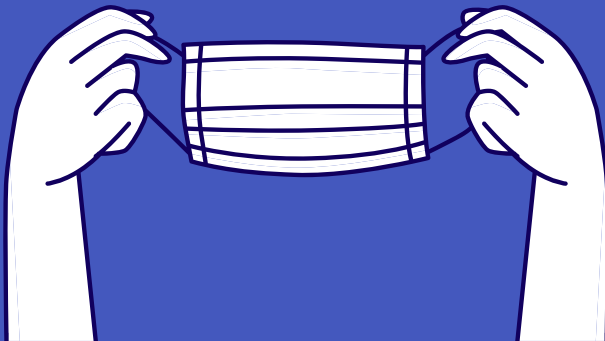


LA PORTE COUNTY CAREER & TECHNICAL EDUCATION

A.K. SMITH CAREER CENTER

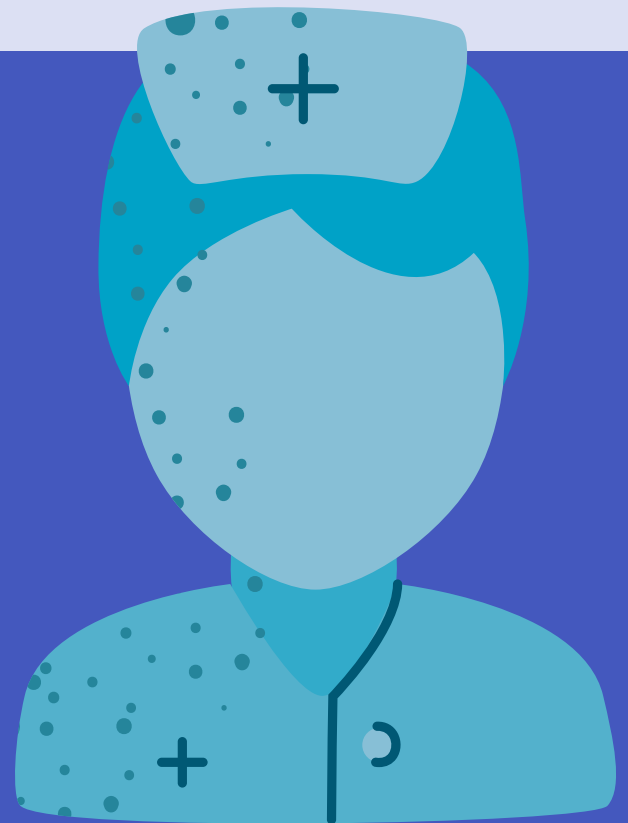
FAQ for AK Smith and Elston

Source: MCAS Reopening Plan 2020



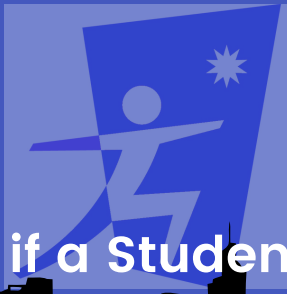
COVID Positive Protocol

Students will be excluded from school. They must isolate at home for 10 days after the first symptoms began AND be fever-free without meds for 24 hours AND have improved symptoms. Contact tracing will be conducted by MCAS and the ISDH.



Untested Students with Symptoms

Students who have not been tested but are exhibiting COVID symptoms will be excluded from school. They must be released by a healthcare provider and be fever-free for 24 hours without meds or be symptom-free for 10 days before returning to school.



What if a Student Shows Symptoms of COVID-19?

Any student exhibiting symptoms of COVID-19 at school will be quarantined in the conference room until a parent or guardian retrieves the student or releases the student to drive home. The student will not be permitted to return until he or she is released by a healthcare provider and is fever-free without meds for 24 hours OR is symptom free for 10 days. If the student tests positive for COVID-19 please let us know so we can notify the central office and contact tracing can begin.

What if a Student Doesn't follow Physical Distancing Guidelines?

Students are expected to maintain physical distancing when possible. It is important to stress the importance of physical distancing continuously. Students who intentionally break physical distancing rules will be sent to the office.

What if a Student Refuses to Wear a Mask?

We protect each other by wearing masks! All staff, students and visitors will be required to have a mask/face covering with them at all times. Masks must be worn at all times. Mask "breaks" will be scheduled when distancing of 6 feet or greater is possible.

What if a Member of my Household Tests Positive?

If a family member tests positive for COVID-19, the student should quarantine at home for 14 days and monitor for COVID-19 symptoms. Contact your health care provider for evaluation, testing, and next steps. Please let the office know you are quarantining (and if you test positive).

What if a Partner School Closes?

We will be notified if a partner school closes. We will communicate any schedule changes to students.



What if a Student Shows Signs of Non-COVID-19 Related Illness on Campus?

Any student who exhibits non-COVID-19 symptoms such as cold or flu will be held in the nurse's office until a parent or guardian retrieves the student.

What are the Requirements for Uniforms?

For programs that require special attire, students are highly encouraged to arrive at AK Smith in uniform. There will be limited changing spaces available. Uniforms should be cleaned at least twice per week. Instructors who require uniforms will be required to submit changing protocols to the CTE Director.

What is the Expected Cleaning Process?

Students and staff should maintain clean spaces by wiping down materials after use such as desks, chairs, machinery, equipment, Chromebooks, textbooks, calculators, keyboards, etc. Materials (sanitizer, disinfecting spray, wipes, etc.) will be provided for this purpose.

Water Bottles

Students are encouraged to bring their own water (bottles should be clearly labeled with student's name). Touchless water filling stations are available to refill bottles.

