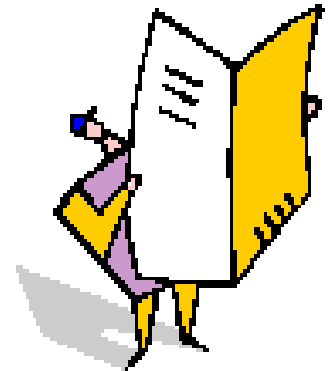
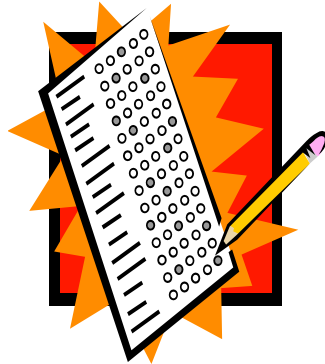
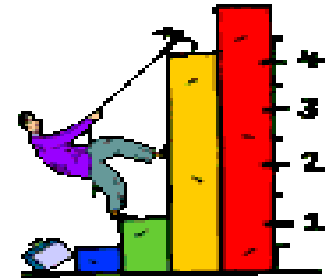
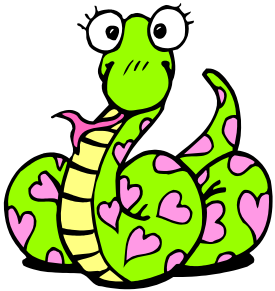


Computer-Based Test-Taking Strategies



Adapted from Matt Guffey, Longridge Elementary School's original presentation

By Danielle Delgado, Technology Coach, Pine School for the Visual and Performing Arts for use with the Indiana ISTEP+ computer-based tests.

“Jail” the Detail!

- Use the “**Highlighter**” tool to help you focus on exactly what the question is asking you to do.

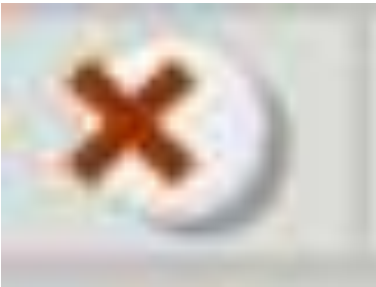


Mr. Detail



Slash the Trash!

- Read ALL of the answer choices. Use the “**Option (Answer Choice) Eliminator**” tool to eliminate the choices you know are wrong. If you need to remove a red “X” – just use the “**Eraser**” tool!



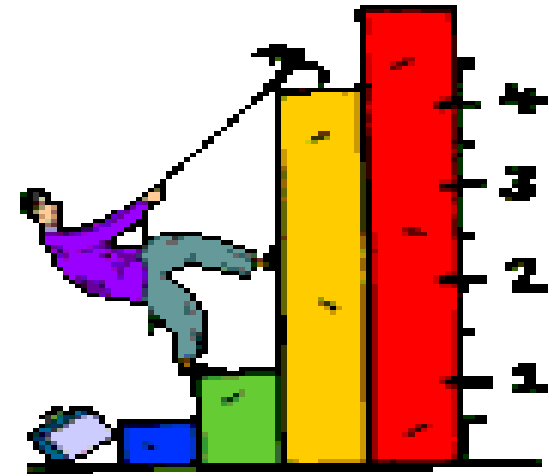
Plug it in, Plug it in!

- Once you have chosen your answer, plug it in and make sure that it makes sense! (this works really well with vocabulary and math questions).



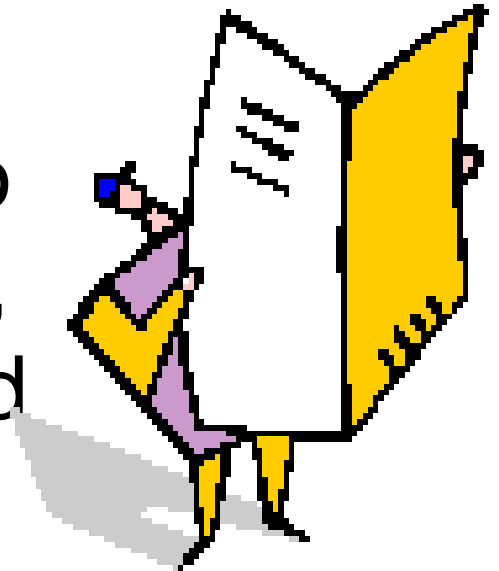
Be Smart With Charts & Zap the Maps!

- Charts and Maps provide information that you can use to answer questions! Analyze **ALL** information provided before answering the questions!



Extra! Extra! Read All About It!

- If the directions say read....
READ! Pay close attention to signal words in the directions, such as *explain*, *interpret*, and *compare*.

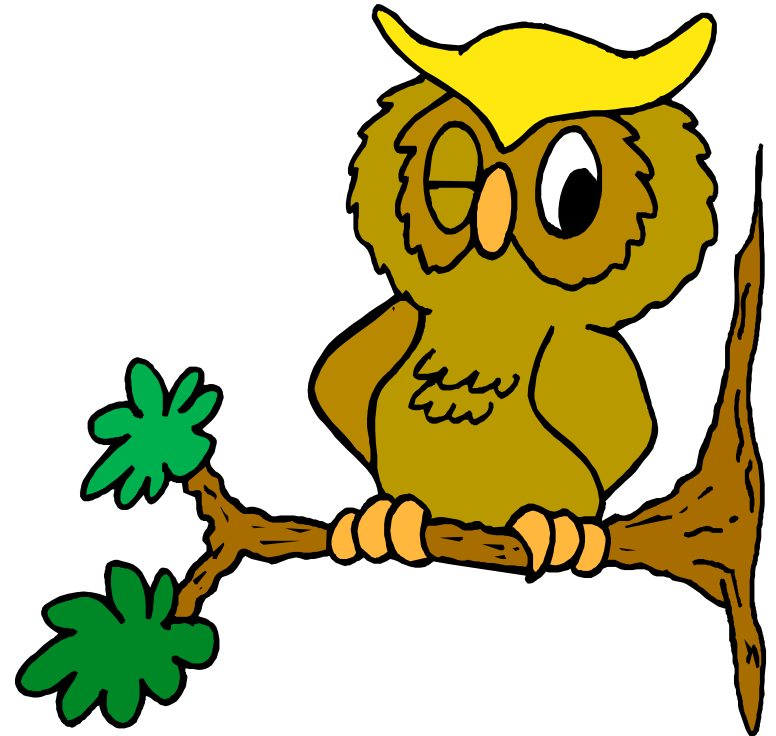


Watch Out! for words like:

“**all**” “**now**” **always**” “**never**”
“**only**” “**exactly**”

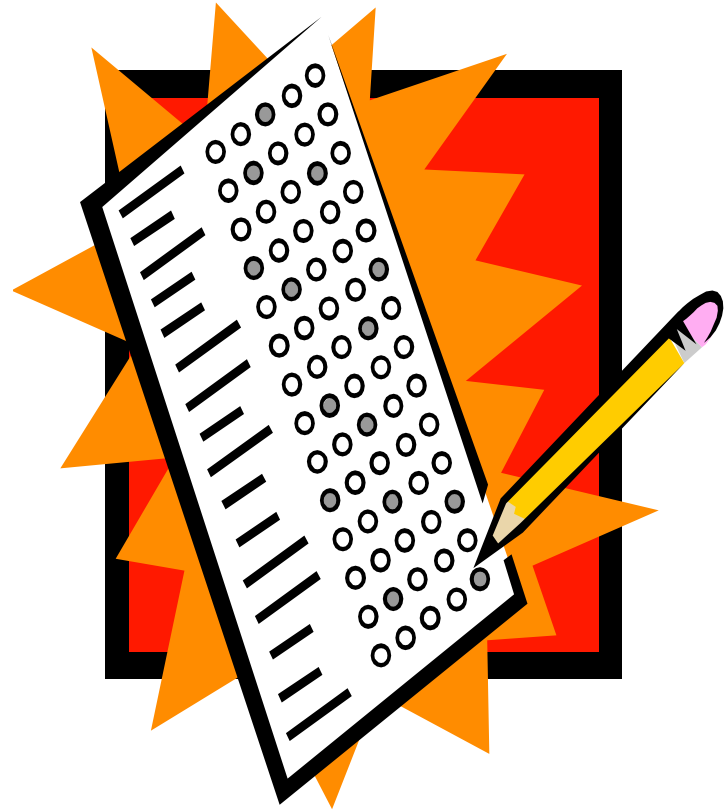
If you **SNOOZE**, You will **LOSE!**

- Take your time!
Don't click so fast,
you have no
chance of getting
the question right!
Click only after
you've read
carefully!



Be a Whiz...with the Grid and Click It!

- Beware! If the answer is not marked, it will not count. So make sure to click it!



Keep On Keeping On!

- If you get to a couple of questions that you just don't know, don't give up! Use the “**Mark for Later Review**” tool and come back to it later!



Rule with the Tools!

Do you have to measure something? Then make sure you Rule with the Tools! Click on the “ $\frac{1}{2}$ inch Ruler and Centimeter (cm) Ruler” tool to use the ruler for all the questions that need to be measured just right!



Check, Check, Check It Out!

- When you have completed the test, go back and check your work (at least twice)!

